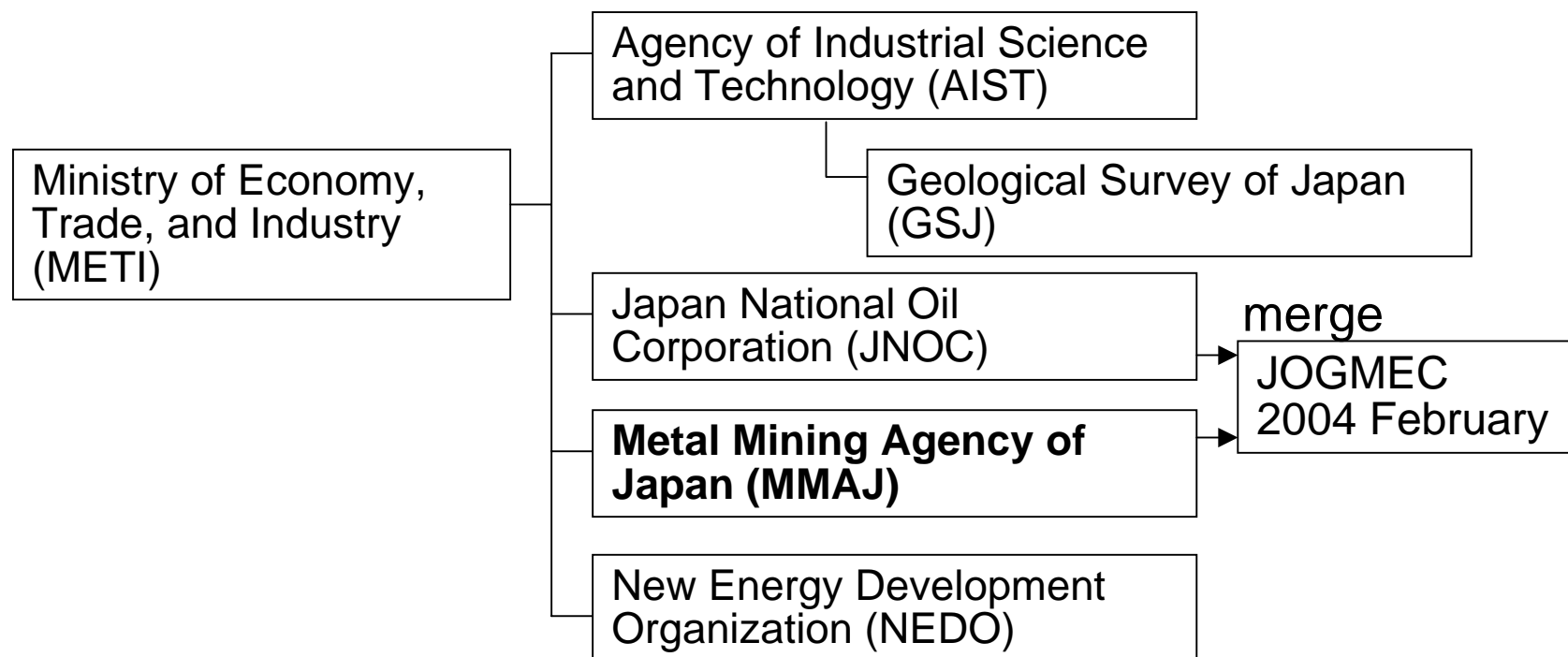




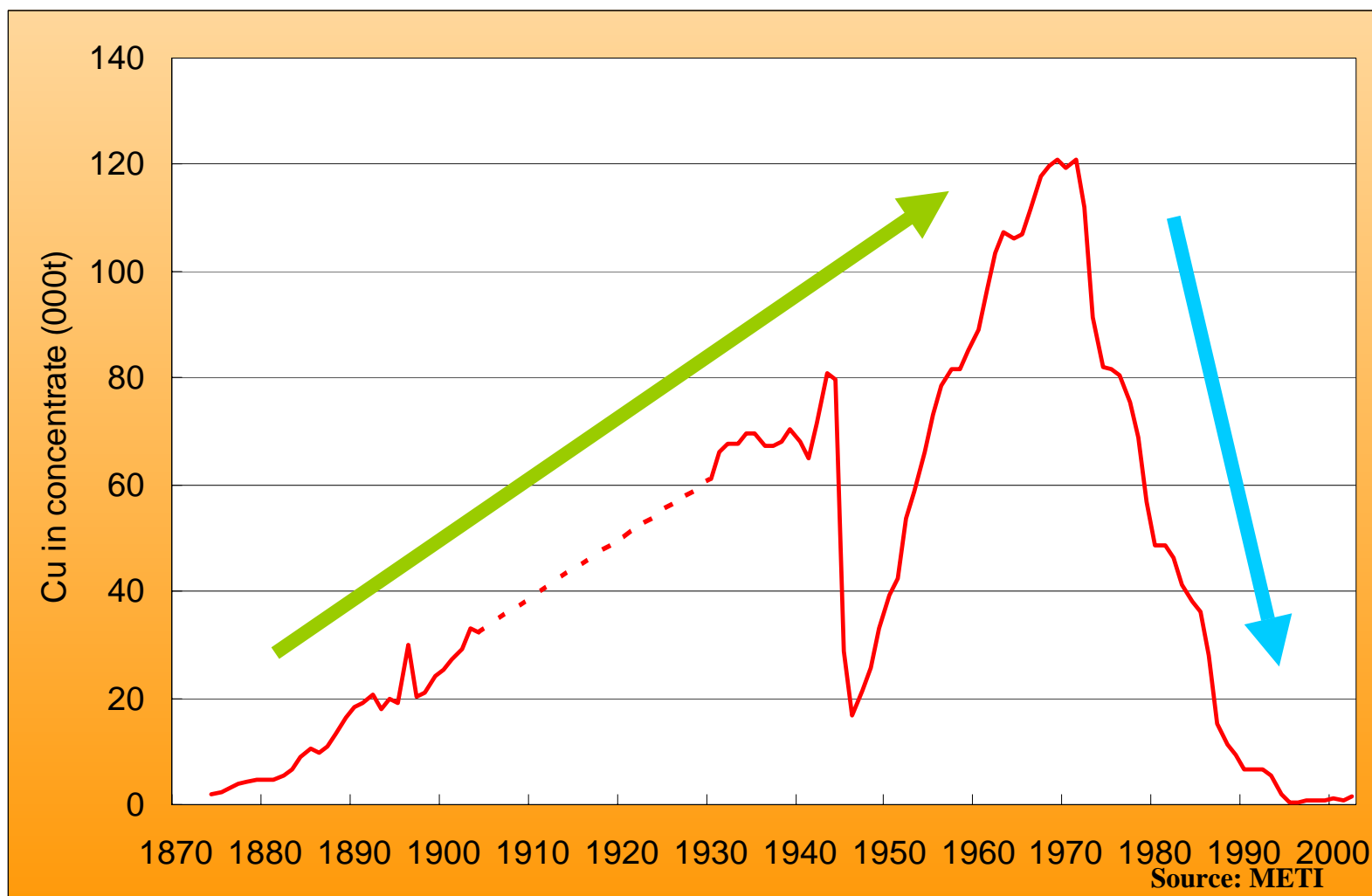
Experience and Current Status of Japan's Overseas Development of Copper Mines

Japan Oil, Gas and Metals National Corporation

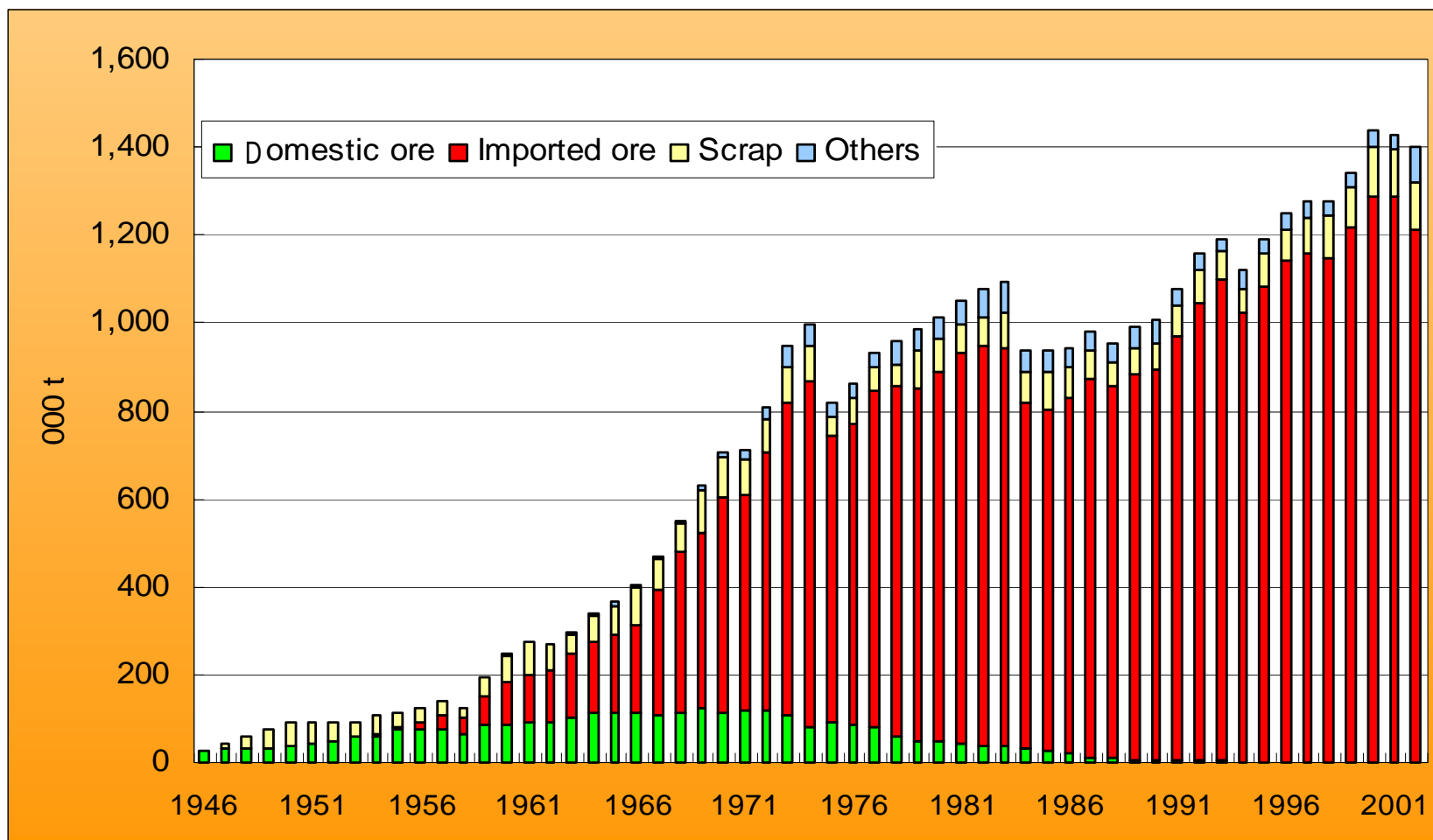
JOGMEC is a new governmental organization incorporating the whole function of the former Metal Mining Agency of Japan.



Copper Mine Production in Japan

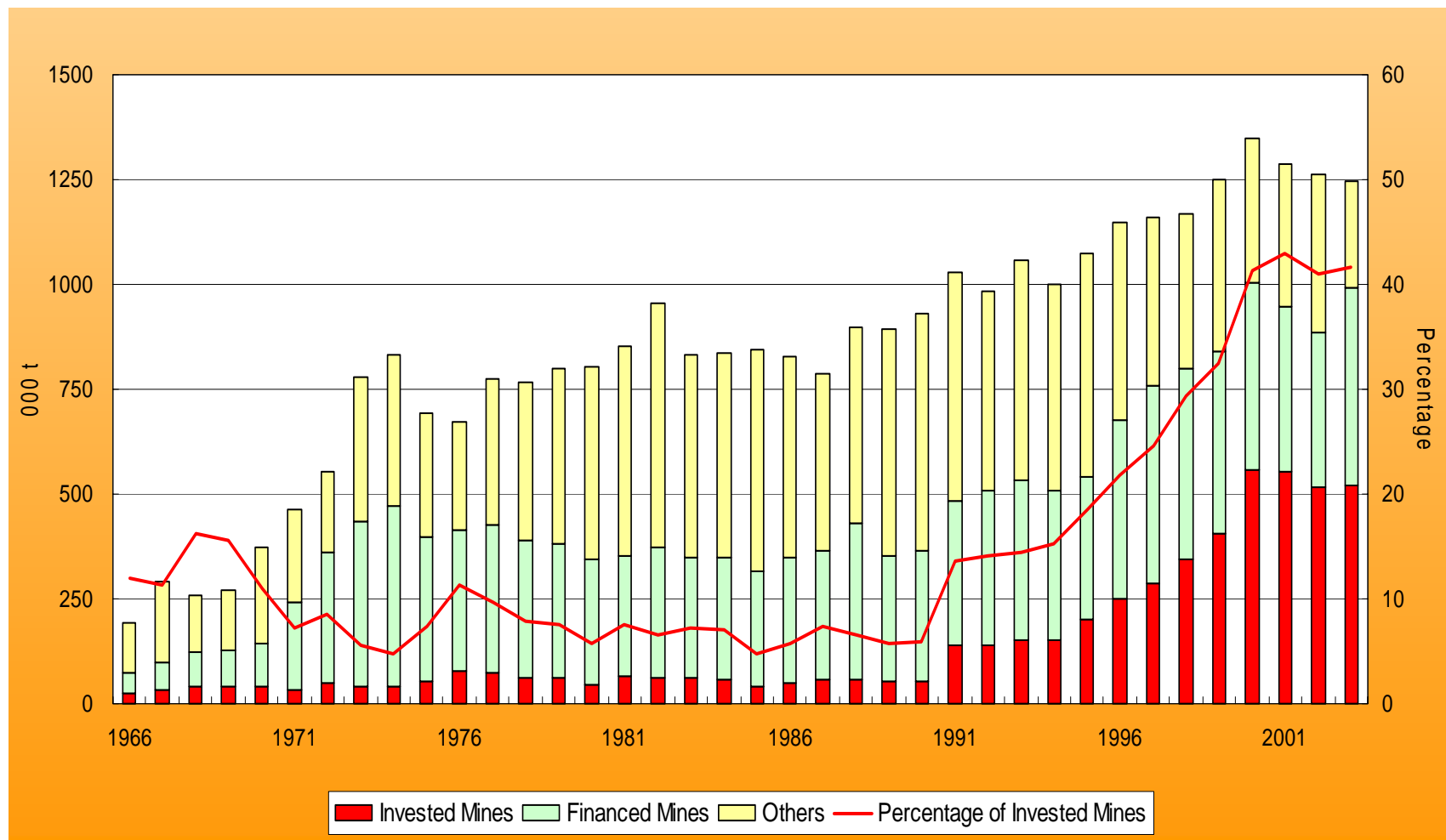


Japanese Copper Production by Source



Source: METI

Sources of Imported Copper Concentrate by Japan



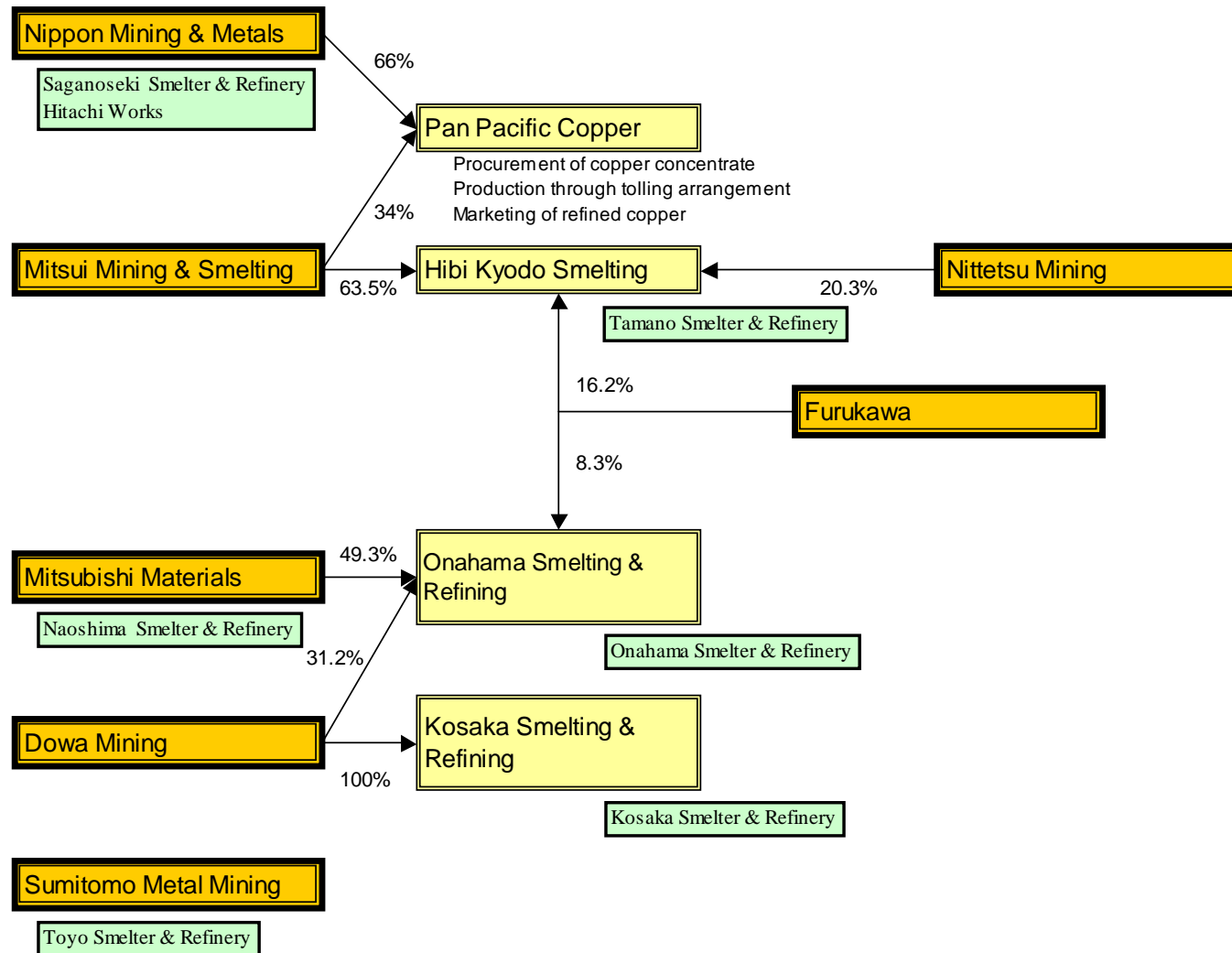
Japanese Companies Involvement in Overseas Copper Mines



5

Mine	Major Products	Country	Production or Farm-in	Japanese Equity Interest	Japanese Companies
Morenci	Cu	USA	1986	15%	Sumitomo Metal Mining, Sumitomo Corp.
Escondida	Cu	Chile	1994	10%	Mitsubishi Corp., Mitsubishi Materials, Nippon Mining, others
La Candelaria	Cu	Chile	1995	20%	Sumitomo Metal Mining, Sumitomo Corp.
McArthur River*	Cu	Australia	1995	30%	Nippon Mining
Northparkes	Cu	Australia	1995	20%	Sumitomo Metal Mining, Sumitomo Corp.
Huckleberry	Cu	Canada	1997	40%	Mitsubishi Materials, Furukawa, Dowa Mining, Marubeni
Collahuashi	Cu	Chile	1999	12%	Mitsui Corp, Nippon Mining, Mitsui Mining
Batu Hijau	Cu	Indonesia	1999	35%	Sumitomo Metal Mining, Mitsubishi Materials, others
Los Pelambres	Cu	Chile	2000	40%	Nippon Mining, Mitsubishi Materials, Marubeni, others
Antamina	Cu, Zn	Peru	2001	10%	Mitsubishi Corp.
Atakama Kozan*	Cu	Chile	2003	60%	Nittetsu Mining

*: MMAJ Related Projects



Copper Smelters & Refineries in Japan



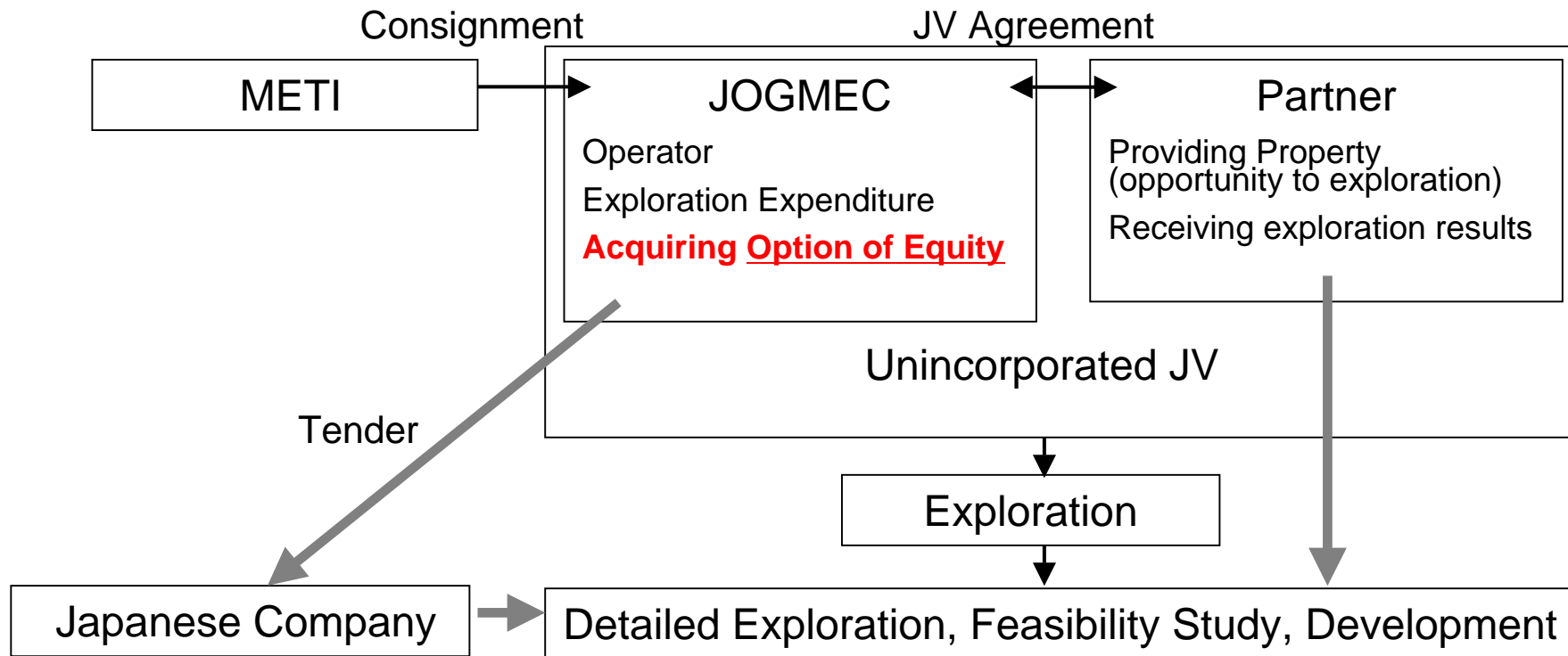
7



Smelter	Capacity 000t
Kosaka	96
Onahama	348
Tamano	263
Naoshima	306
Toyo	300
Saganoseki	470
Total	1,783

Source: ICSG

- Mineral Resource Information Service
 - Collecting & distributing overseas resource information
 - 9 metal-related overseas offices
- Geological Surveys (Overseas, Domestic)
 - Satellite image analysis
 - Geological surveys with Japanese private companies
- Finance (Overseas, Domestic)
 - Finance for mineral resource exploration by Japanese companies
- Technical Cooperation for Developing Countries
- **Joint Basic Exploration Scheme (JBES)**



Contact

Kawasaki Headquarter

Business Promotion Team, Metals Exploration Group

TEL +81-44-520-8649

FAX +81-44-520-8740

jogmecjbes@jogmec.go.jp <http://www.jogmec.go.jp>