



GEO MINAS S.A

**GEOLOGICAL, MINING AND
INFRASTRUCTURE ENGINEERING
SERVICES IN COLOMBIA**



WELCOME

S.A.

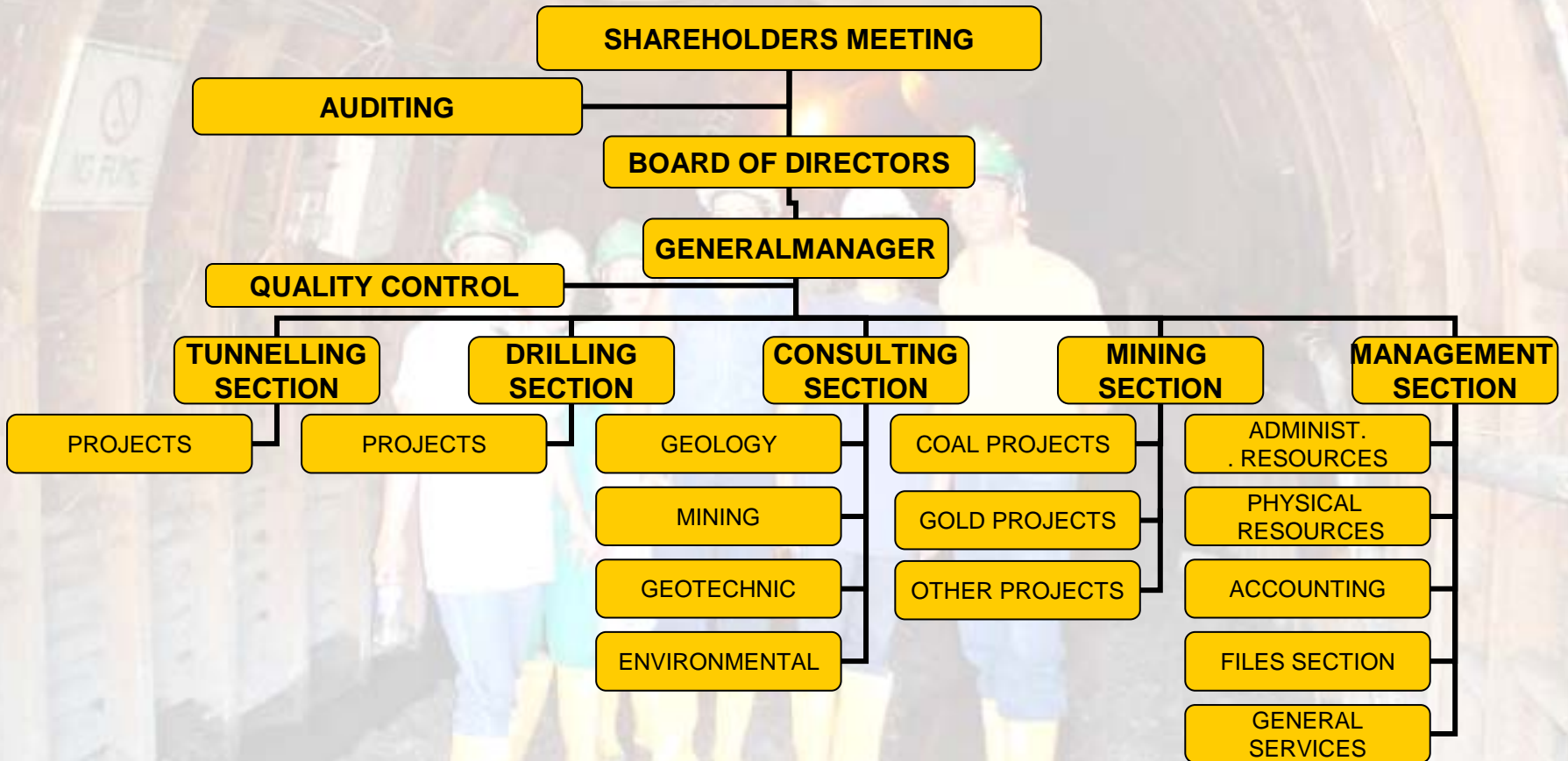
INGENIEROS

WHO ARE WE

- **GEOMINAS as an engineering company that can provide:**
 - Economic exploitation of mineral resources
 - Drilling exploration
 - Tunnelling excavation
 - Geological, mining and environmental consulting
- **Historical review**
 - Foundation year 1969
 - Foundation as a holding 1994
 - Quality Certification ISO 9001-2000
- **OUR BEST EXPERIENCE....OUR PEOPLE!**

2004

OUR ORGANIZATION



GEOMINAS HOLDING

NAME	PROPERTY	TYPE
PROMEXCO S.A.	34.0 %	SUBSIDIARY
CARMINALES	34.7 %	SUBSIDIARY
PROMINORTE LTDA.	27.5 %	SUBSIDIARY
NORCARBON	34.8 %	SHAREHOLDER
CARBONES NECHÍ LTDA.	27.0 %	SHAREHOLDER

2004

ORGANIZATION

VISION

Geominas will be a Colombia leading company in geological and mining services in according with nature and sustainable development.

MISION

Geominas is an engineering company to make consulting studies, help for the best exploitation of the mineral resources and tunnelling construction for underground works using clean and up-to-date technologies.

2004



FIELDS OF OUR SERVICES

- **COAL**
 - Inside and outside coal trade
- **CIVIL WORKS**
 - Constrution
 - Main speciality: tunnelling and others underground works
- **DRILLING EXPLORATION**
 - Core
 - Speed
- **CONSULTING STUDIES**
 - Exploration mineral
 - Mine design
 - Geotechnic
 - Enviromental

COAL

Geominas makes geological and mining studies to many clients.

- CUSTOMERS

- INTERCOR (CERREJON COAL)
- CARBOCOL (INGEOMINAS)
- CMU
- CARBONES COLOMBIANOS DEL CERREJON
- PROMEXCO
- CARMINALES
- CARBONES NECHI
- PROMINORTE
- NORCARBON
- SOPROMIN

CIVIL WORKS

Tunnelling construction to public works and underground mining projects

- **CUSTOMERS**

- EEPPM (hydroelectric, water-supply line)
- EAAB (hydroelectric, water-supply line)
- ISA (hydroelectric)
- CEMENTOS CAIRO (cements)
- INVIAS (roads)
- INGETEC (consulting)
- AIA (hydroelectric)
- HIMAT (water-supply line)

DRILLING EXPLORATION

Core and speed exploration drilling.

- CUSTOMERS:

- INTERCOR (CERREJON COAL)
- CARBOCOL (INGEOMINAS)
- INGETEC (consulting)
- GREYSTAR (gold)
- INGEOMINAS (coal)
- TOTAL (oil)
- GEOMET (coal)
- CEMENT INDUSTRY
- EEPPM (hydroelectric, water-supply line)
- NITTETSU MINING Co (copper)

CONSULTING

Geological studies, exploration and resources evaluation, mine design, geotechnical and environmental studies.

- CUSTOMERS:

- CEMENT INDUSTRY (calcareus)
- CARBONES NECHI (coal)
- NORCARBON (coal)
- CARBONES COLOMBIANOS DEL CERREJON (coal)
- CMU (coal)
- CARBOCOL (INGEOMINAS) (coal)
- GREENSTONEL (gold)
- UPME (mining)
- SIMINERA (coal)