



**COCHILCO**  
Ministerio de Minería

Gobierno de Chile

# Cochilco and Investment portfolio in Chile

January 20, 2015

Sergio Hernandez  
Executive Vice-President  
Chilean Copper Commission



# Contents

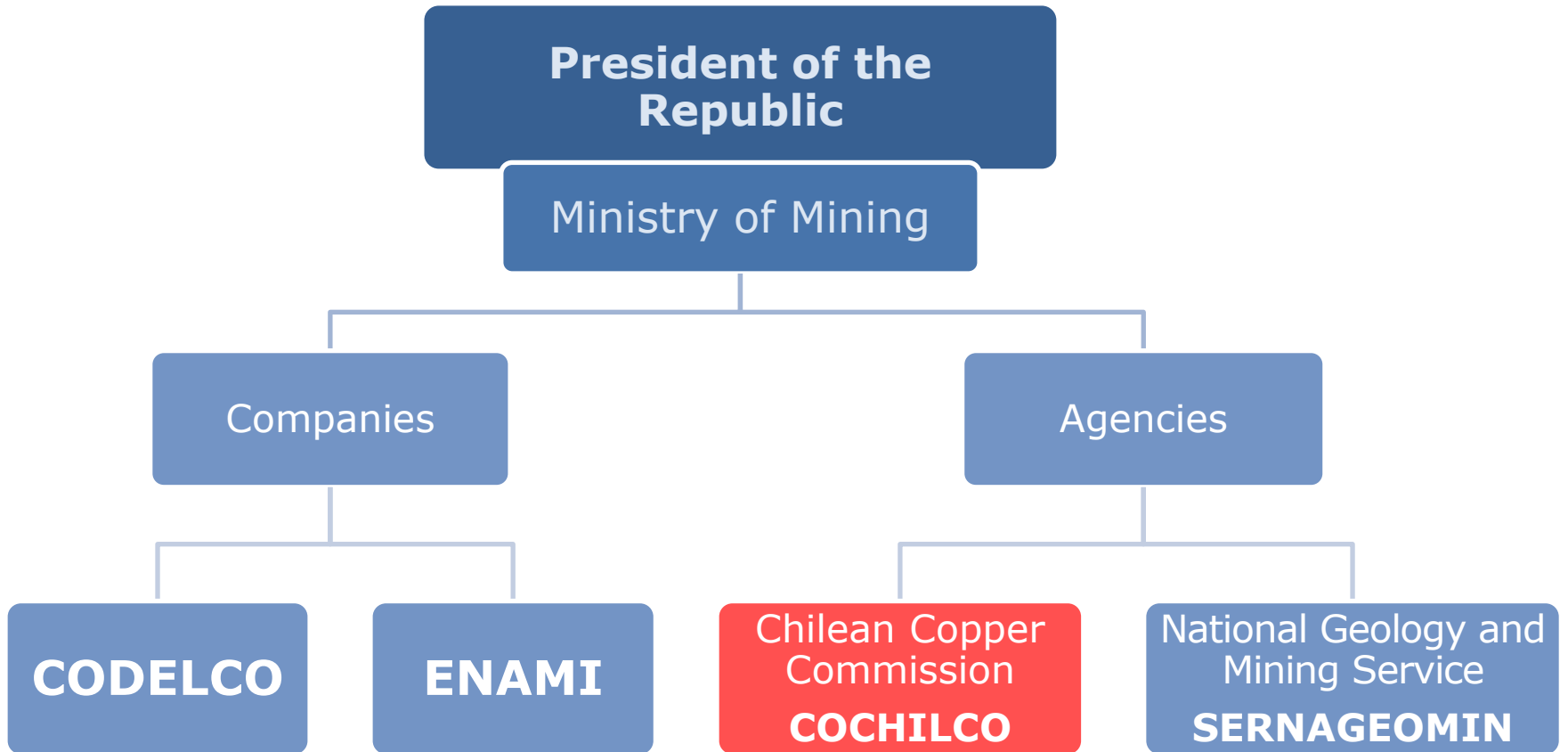
- 1. About Cochilco: organization and functions**
- 2. Investment portfolio in Chilean mining projects**
- 3. Maximum production capacity**



# **1. About Cochilco: organization and functions**

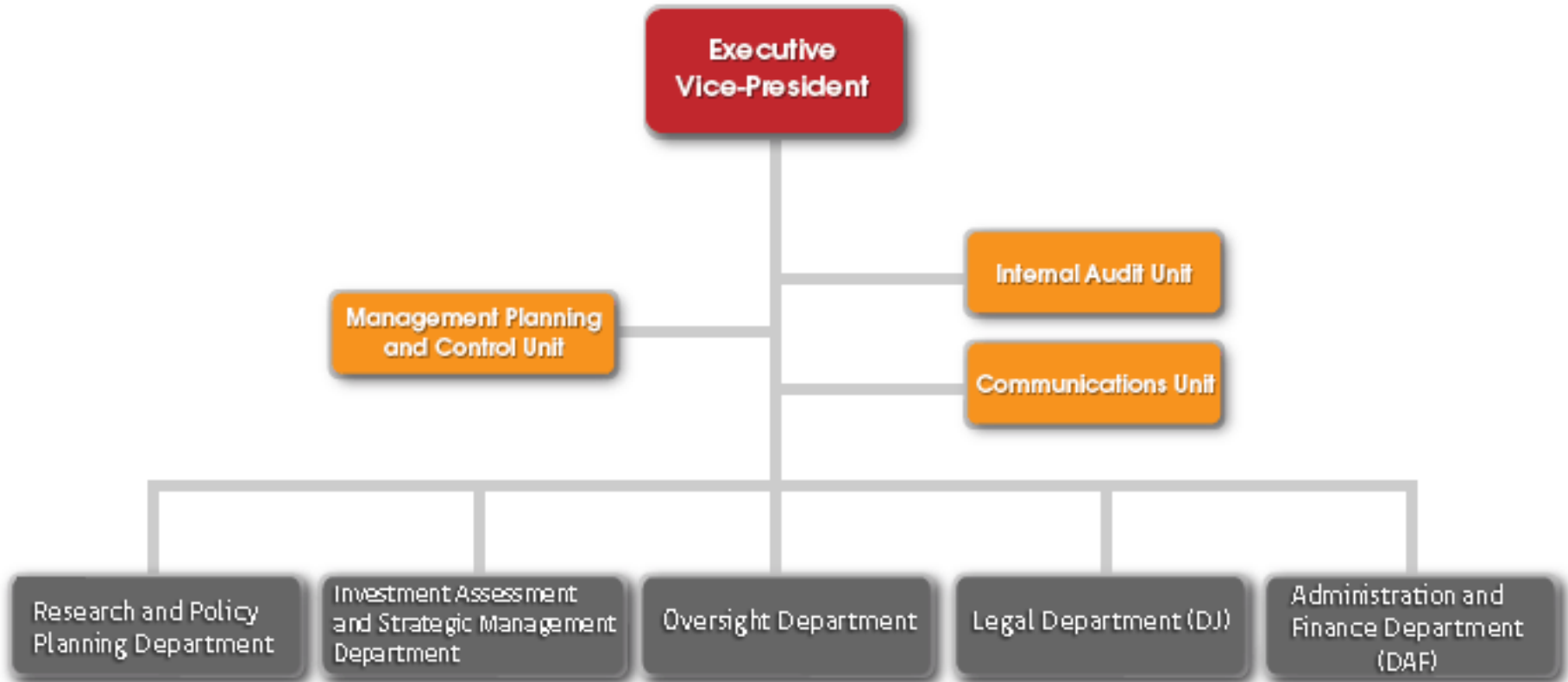
# About Cochilco

Public institutions related to the mining sector / Organization



# About Cochilco

## Chilean Copper Commission / Organization



# About Cochilco

## Organization

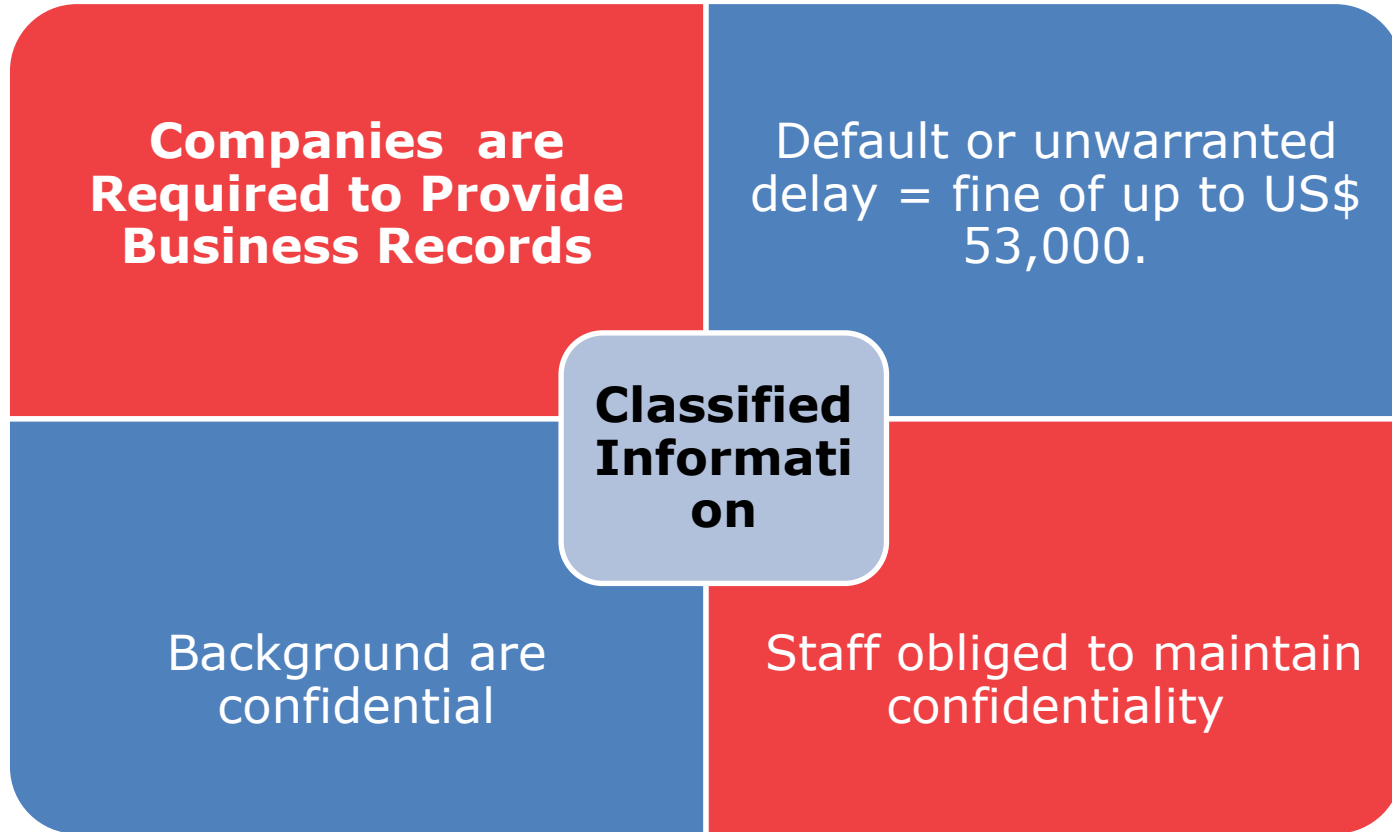
The Chilean Copper Commission (COCHILCO) is a specialized technical agency established in 1976.

Cochilco advises the Chilean government on matters concerning the production of copper, copper by products, metals and industrial minerals, except coal and fuels.



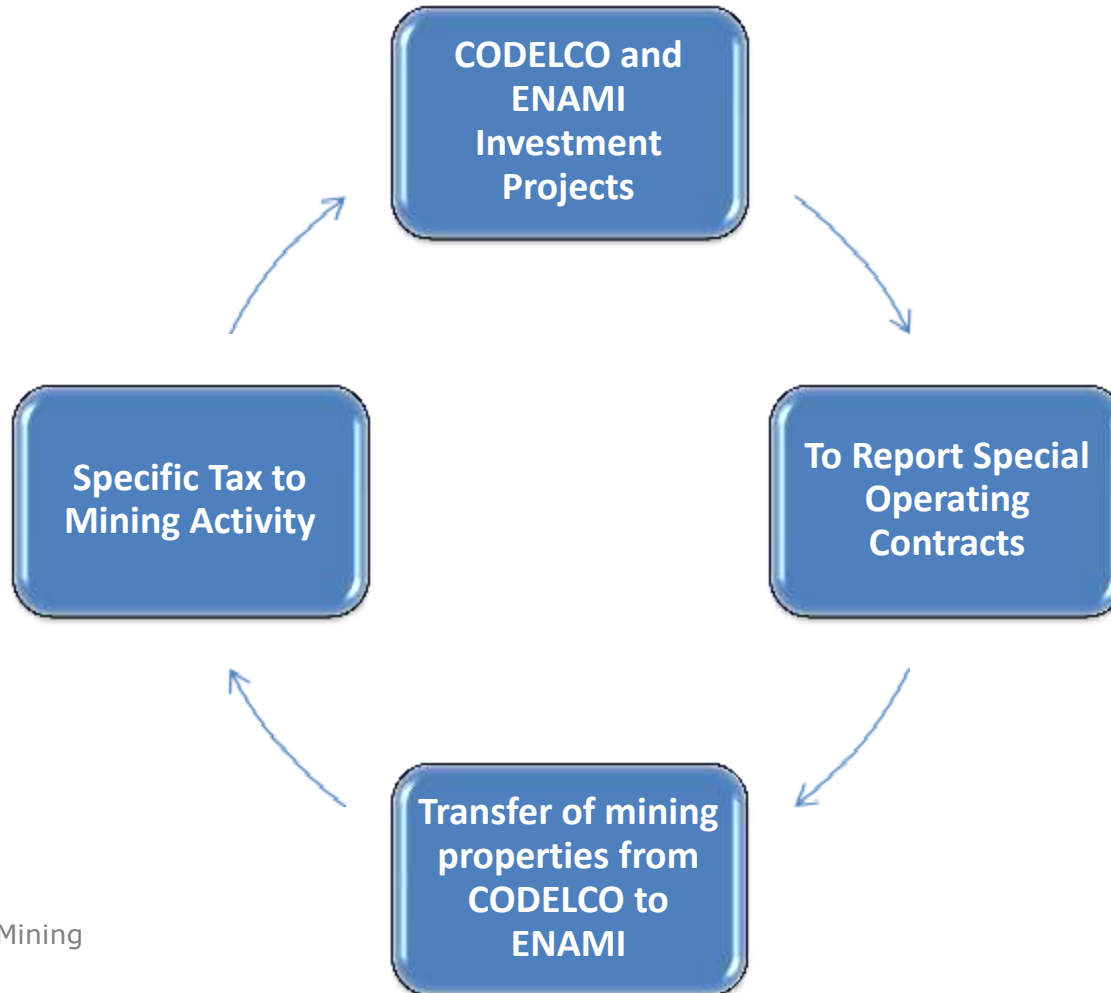
# About Cochilco

To maintain secret information



# About Cochilco

Cochilco competences regulated in other laws



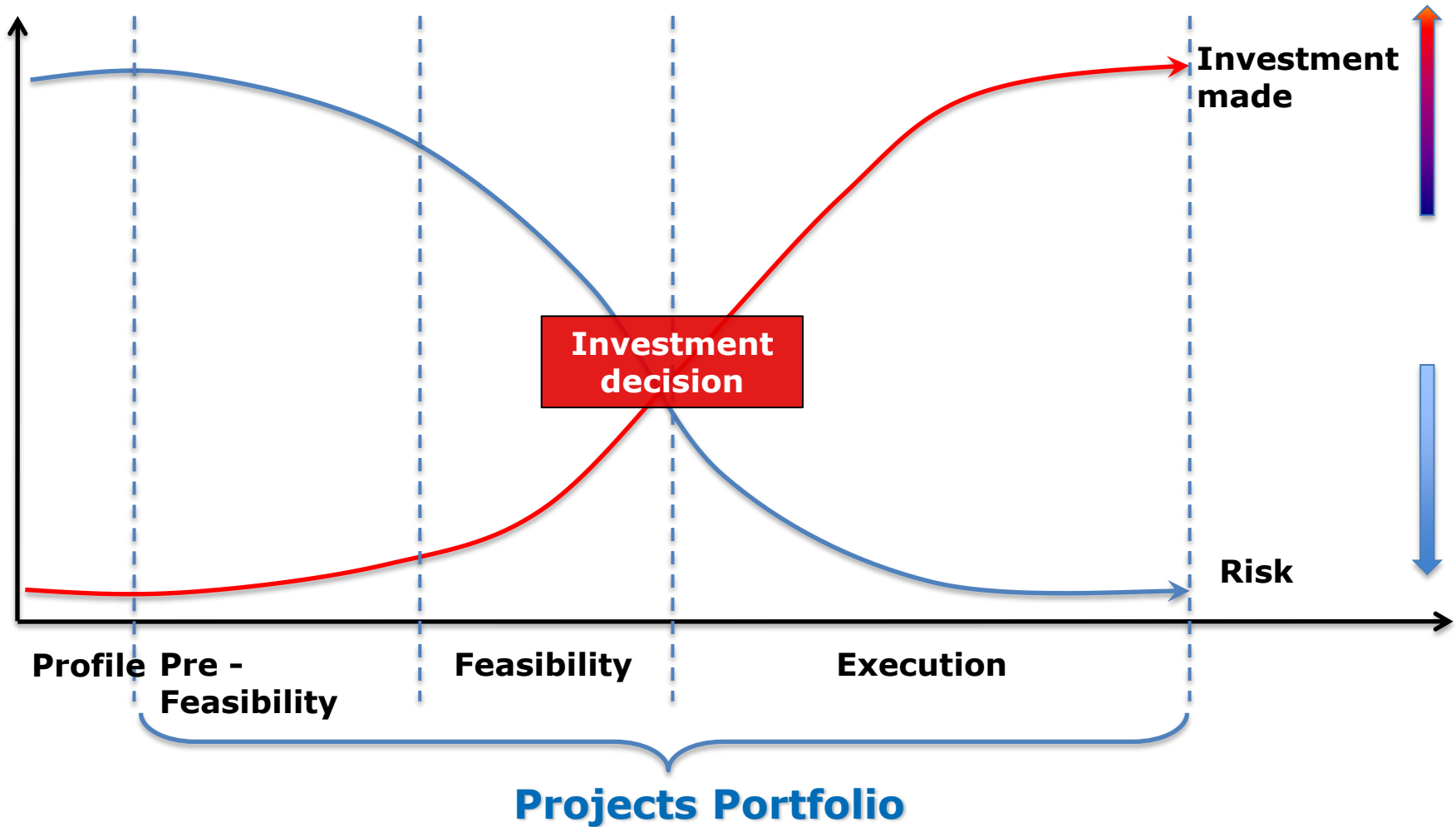




## **2. Investment Portfolio in Chilean Mining Projects**

## 2. Investment portfolio in Chilean mining projects

### Stages of an Investment Project



## 2. Investment portfolio in Chilean mining projects

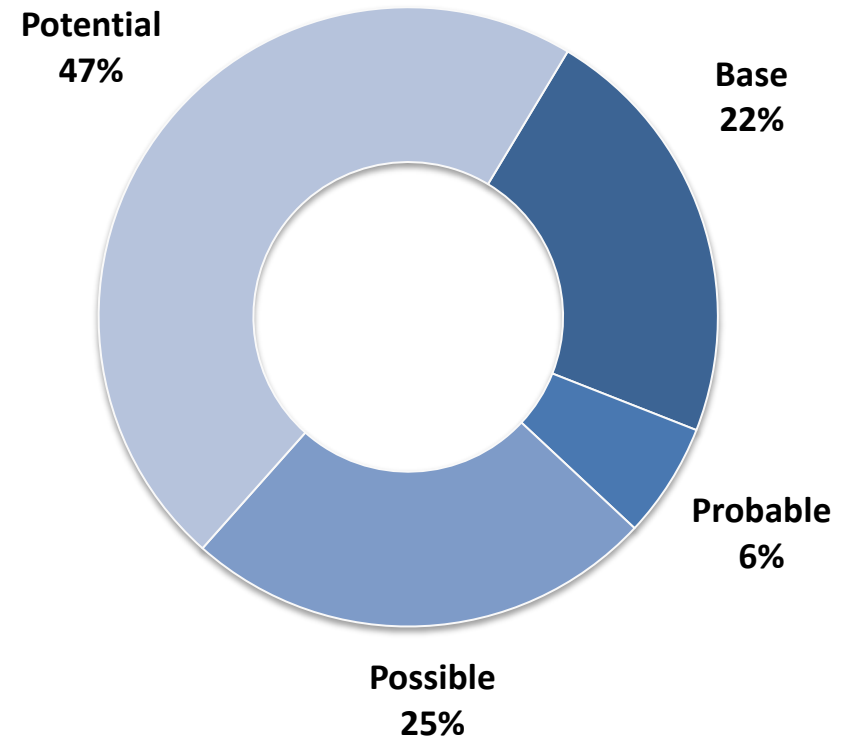
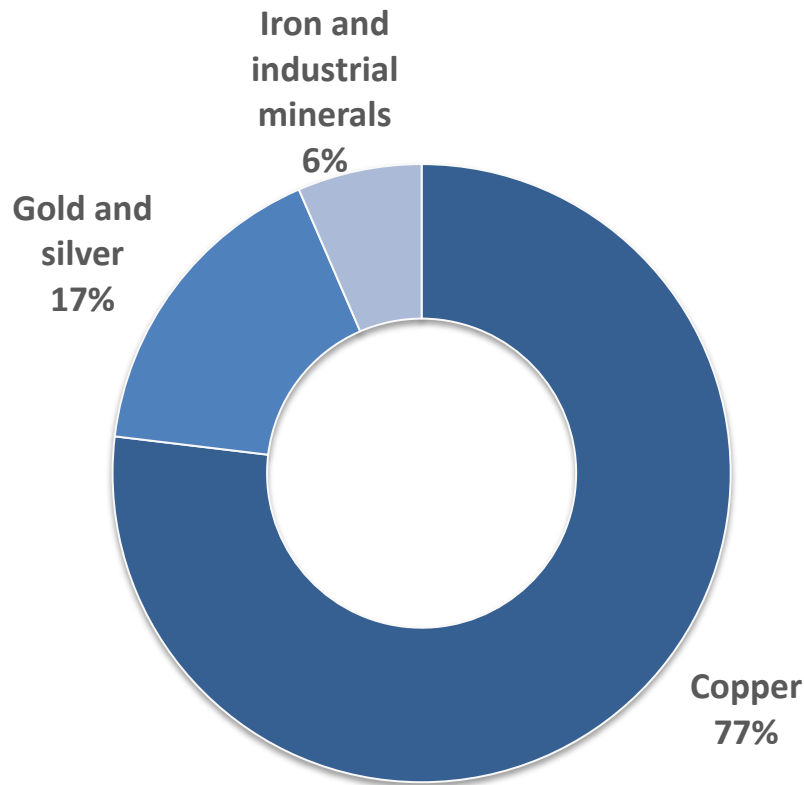
### Degree of Certainty Condition

| Condition        | Kind of project         | Stage of progress     | Noun EAS                           | Start up                      |
|------------------|-------------------------|-----------------------|------------------------------------|-------------------------------|
| <b>BASE</b>      | Any                     | In execution          | EQR approved                       | During the period 2014 - 2018 |
|                  | Any                     | Execution suspended   | EQR approved or in court claim     | During the period 2014 - 2018 |
| <b>PROBABLE</b>  | Any                     | Feasibility           | EQR approved                       | During the period 2014 - 2018 |
|                  | Reposition or Expansion | Feasibility           | IEE o EID in noun                  | During the period 2014 - 2018 |
|                  | Reposition or Expansion | Feasibility suspended | IEE o EID in noun                  | During the period 2014 - 2018 |
| <b>POSSIBLE</b>  | Reposition or Expansion | Feasibility           | IEE o EID not submitted            | During the period 2014 - 2018 |
|                  | New                     | Feasibility           | IEE o EID in noun or not submitted | During the period 2014 - 2018 |
|                  | Any                     | Feasibility           | EQR approved                       | Out of period                 |
|                  | Reposition or Expansion | Feasibility           | IEE o EID in noun or not submitted | Out of period                 |
| <b>POTENTIAL</b> | Any                     | Feasibility suspended | Whatever                           | Out of period                 |
|                  | Any                     | Pre- feasibility      | Whatever                           | Whatever                      |

## 2. Investment portfolio in Chilean mining projects

### Mining projects portfolio

Portfolio of **53 initiatives** to be developed between 2014 and 2023 with a total investment of **US\$ 104.9 billion**.



## 2. Investment portfolio in Chilean mining projects

### Mining projects portfolio

A total of 53 initiatives to materialize between 2014 and 2023.

- ✓ 34 correspond to copper mining of which:
  - 18 projects correspond to the large-scale private mining.
  - 6 projects correspond to the medium-scale mining.
  - CODELCO setpoint 6 structural projects, plus additional lines of investment in other development and information projects to be executed in the period 2014 - 2018.
  
- ✓ 10 correspond to gold and silver mining.
  
- ✓ 5 correspond to iron mining.
  
- ✓ 4 correspond to industrial minerals.

## 2. Investment portfolio in Chilean mining projects

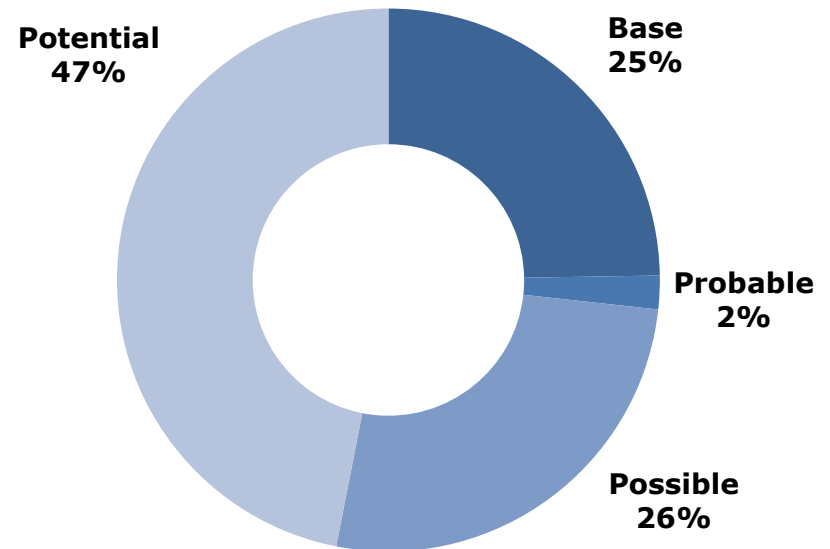
### Copper Mining

#### Projected Investment in Copper Mining to 2023

| Copper Mining Sector | Number of projects | Investment (MMUS\$) |
|----------------------|--------------------|---------------------|
| CODELCO              | 8                  | 28,137              |
| Large-Private Mining | 19                 | 48,722              |
| Medium-Scale Mining  | 6                  | 3,273               |
| Metallurgical Plants | 2                  | 490                 |
| <b>Total</b>         | <b>35</b>          | <b>80,622</b>       |

#### Distribution of investment in copper mining according to condition

(Total investment : MMUS\$ 80,622)



## 2. Investment portfolio in Chilean mining projects

Gold, iron and industrial minerals

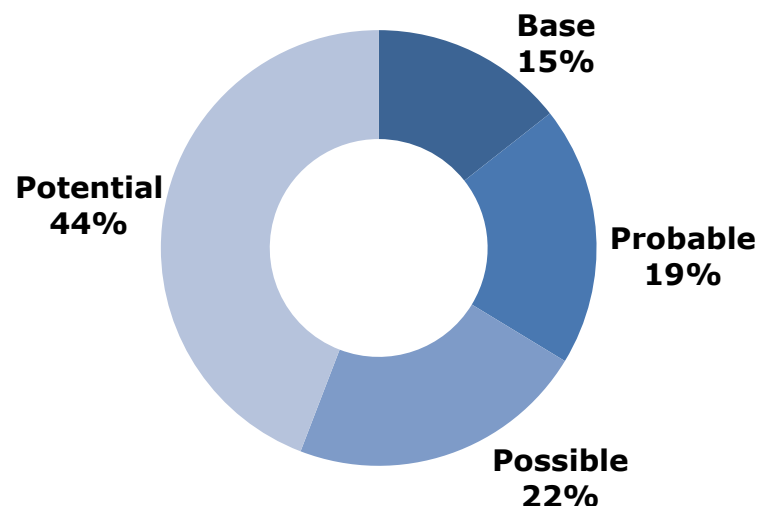
### Projected Investment in Other Mining Industries\* to 2023

| Mining              | Number of projects | Investment (MMUS\$) |
|---------------------|--------------------|---------------------|
| Gold & Silver       | 10                 | 17,382              |
| Iron                | 5                  | 4,519               |
| Industrial minerals | 4                  | 2,328               |
| <b>Total</b>        | <b>19</b>          | <b>24,229</b>       |

\* Other Mining Industries: it is understood as the mining of gold and silver, iron and industrial minerals. Copper mining is excluded.

### Distribution of investment in Other Mining Industries according to condition

(Total investment : MMUS\$ 24,229)



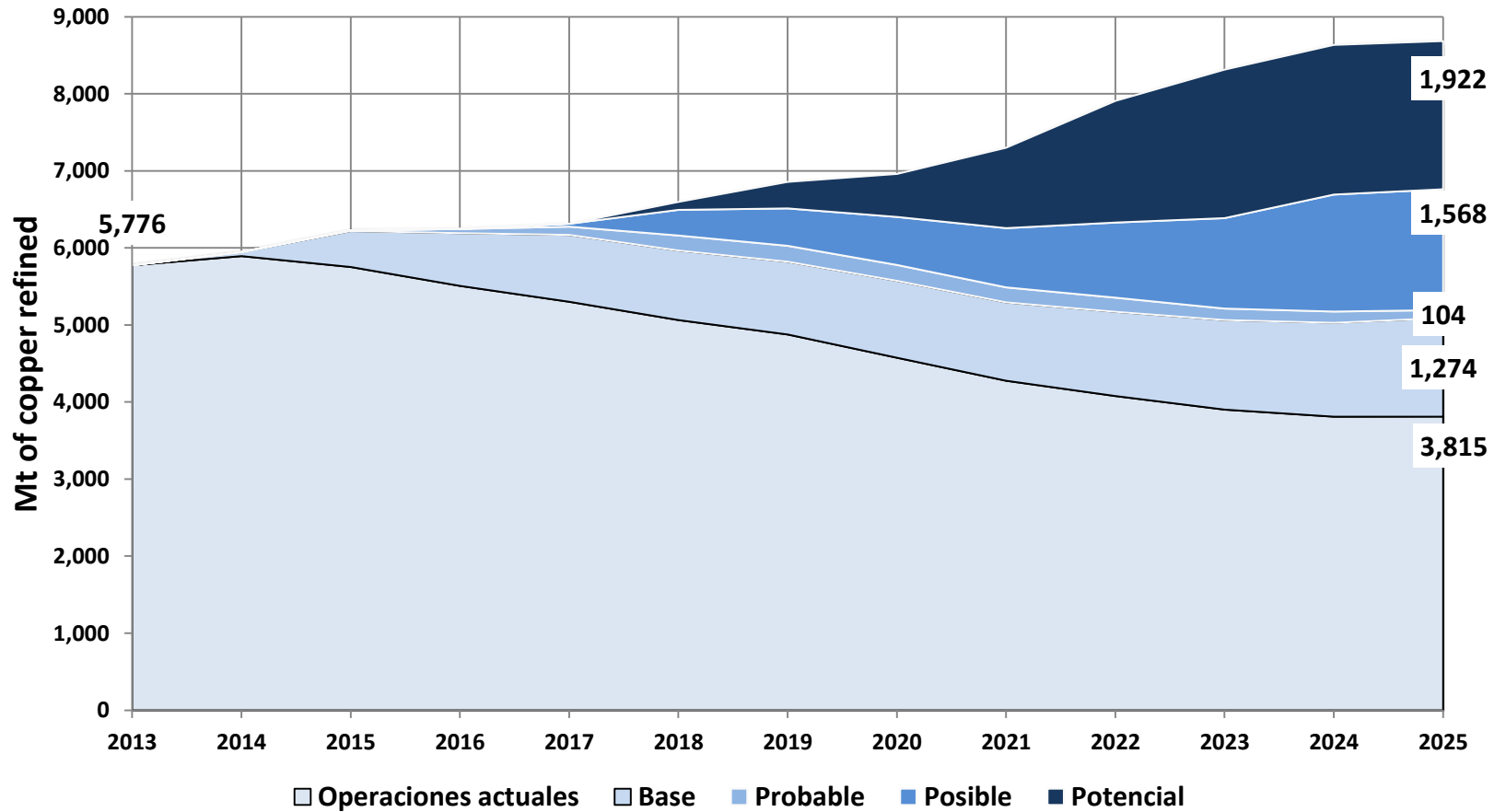


### **3. Maximum production capacity**



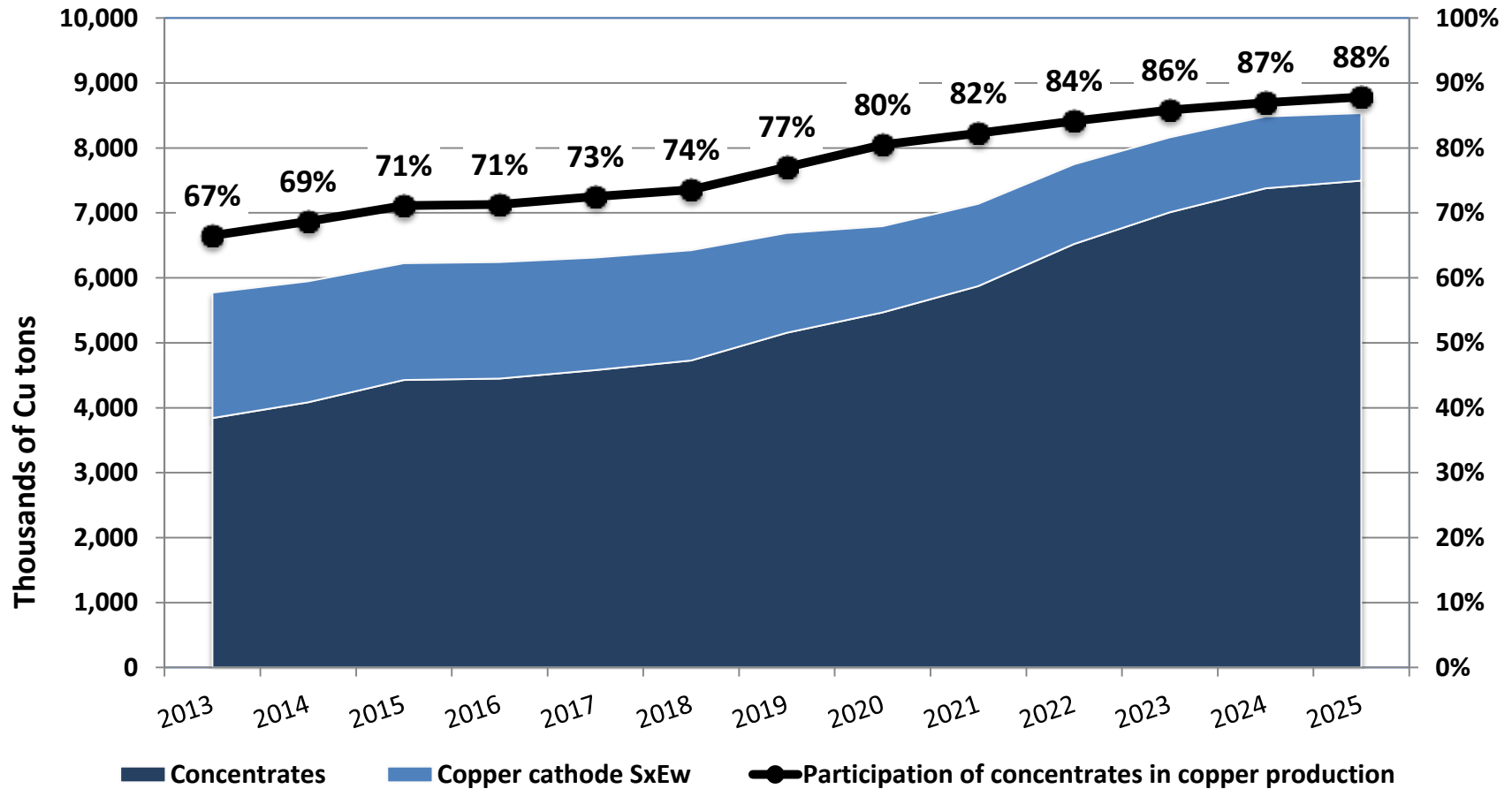
### 3. Maximum production capacity

Project portfolios 2014 by condition



### 3. Maximum production capacity

#### Copper production forecast by product



### 3. Maximum production capacity

Contributions to future production of other mineral substances

| Estimated maximum production by mineral | 2013   | 2025    | Growth |
|---|--------|---------|--------|
| Gold (Kg per year)                      | 51,309 | 149,480 | 191%   |
| Molybdenum (tpy)                        | 38,716 | 106,452 | 175%   |
| Iron<br>(Mtpy of mineral of Fe)         | 17,109 | 48,366  | 183%   |